

# Newsletter

## InFocus at DVCC

5th January 2025



## What will 2025 hold for us?

This year Deane Valley Camera Club is 74! Which begs the question what are we going to do to celebrate being 75 years old in 2026. Perhaps we need to start planning now!

So I've lifted this article from [wathandwestmelton.dearnevallyhistory.org.uk/](http://wathandwestmelton.dearnevallyhistory.org.uk/) who share a copy of the South Yorkshire Times dated November 1951



### **New Camera Club launched: Wath and District Camera Club,**

A new venture for photography enthusiasts, was given an excellent send-off at a meeting in Manvers Main Boys' Club on Monday evening. The club is indeed grateful to Mr. Roland Watson N.C.B. Welfare Officer, through whose most valued co-operation a room has been made available to members without cost for all future meetings. This will be headquarters and meetings are to be held there on the second and fourth Mondays of each month commencing in November. In the meantime, an appointed committee is to meet to draw up rules and a syllabus.

The Club has elected Mr. W. R. Barker (picture) F.G.S. of Fitzwilliam Avenue, Wath-on-Deane, a Director of Waterstone Glassware Ltd., member of the Yorkshire Archaeological Society, and a past President of the Barnsley Naturalists' Society, as its first president, and Mr. R. D. Ridyard, (Sub-Editor "South Yorkshire Times" Series) and Mr. O. Elliott, (Rotherham) as its first vice-presidents. Secretary is Mr. C. Hall, 58 Princess Street, West Melton, and Treasurer Mr. R. Rooke. The committee members are Messrs. J. F. G. Cheetham, J. Harper, R. Gillis, F. S. Hargreaves, J. Bentley and D. Bradley.

Over 20 members were present at Monday's inaugural meeting, and they decided to fix annual subscriptions at 4s. for under 18's., 8s. for members 18-21, and 10s. for over 21's, with special concessions to national servicemen. Several topics for future meetings were talked over; among them suggestions for talks on types of cameras, use of cameras, choice of subjects, types and films and

### **Coming Soon**

**Our next meeting is on the 9th January via Zoom.** We will be joined by an external speaker, Daniel Bridge.

### **Somethings never change**

The founders would have been interested in composition, balancing the exposure via shutter speed, aperture and ISO and perhaps dodging and burning and post processing their images in the darkroom.

Looks like the meeting topics haven't changed that much in last 74 years, although it makes you wonder what they would have made of Zoom

plates, development, the making of print and enlargements and colour work. The probability of periodic competitions was also mooted.

For their meeting on November 12th members have each been asked to take along their cameras for an informal talk on cameras and how to get the best out of them. New members will be especially welcome if they care to attend that meeting at 7 p.m.

### So, get 'yer thinking caps on'!

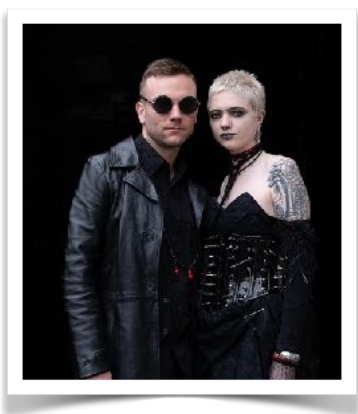
If you've any ideas about celebrating 75 years let us know. Can't think that far ahead but have some ideas as to what we could do in the coming weeks, 'let us know'.

### Rugby Union.

Next home match for Wath Upon Deane RUFC is 11th January for the 1st XV against North Ribblesdale (the league leaders who have played 12, won 12 and have a points difference of plus 403!

### A reflection of 12

Many members, took time over Christmas and New Year Period to share, via Facebook, a series of 12 photographs taken over the last 12 month. No theme, just photographs they liked which perhaps told a story of their year. I've lifted these from our members only Facebook page.



Tom goes fashion



The other side of the rare bum picture by Ali



Lounge about by Chrissy



Cath keeping it in the family



David's Street of Havana



Patrick hits the streets



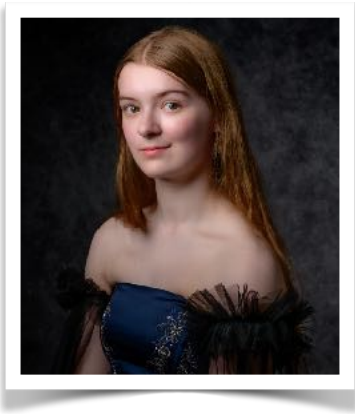
Art deco by Neil



Lighting the way by Marsha



Bev's foot forward



Nigel offers a portrait



Frozen screen by Neil



David T's second home

## Calendar of events

9th Jan 2025	Thursday	<b>Zoom</b>	External Speaker	Daniel Bridge will give a talk on photographing water
15th January	Wednesday	<b>Wath Rugby</b>	Gill Batson	Rules, conditions and guidance for submitting to YPU - Gill will share some past accepted images to view
23rd January	Thursday	<b>Zoom</b>	Sally Sallet	Critique and prep for YPU - How to improve photos. <b>submit your possibles by 17th Jan prior to 10:00</b>
30th January	Wednesday	<b>Wath Rugby</b>	Show and Tell	3 x triptychs showing a day in your life

The work of Daniel Bridge can be found at

<https://www.danielbridge.co.uk/>

The link for your possible YPU entries for critique by Sally is

<https://www.dvcc.co.uk/imageuploads>

This week's recommended YouTuber is Sean Tucker.

<https://www.youtube.com/@seantuck/videos>

Gill is going to share with us how to get your photographs (and hopefully your prints) ready for YPU and you will also have the chance to get your potential submissions assessed by an external judge (Sally Sallett). If, in preparation for YPU, you want to take advantage of the critique by Sally then send in your images (3 max) via our website **before 10:00 am on the 23rd January** - make sure you use the correct link - use the "YPU Possibles for internal judging" link. (See red box on page 1)

There will be a **separate link for actual submissions to YPU** and you will have to submit your entries there - even if you previously fed them into the "possibles" link.

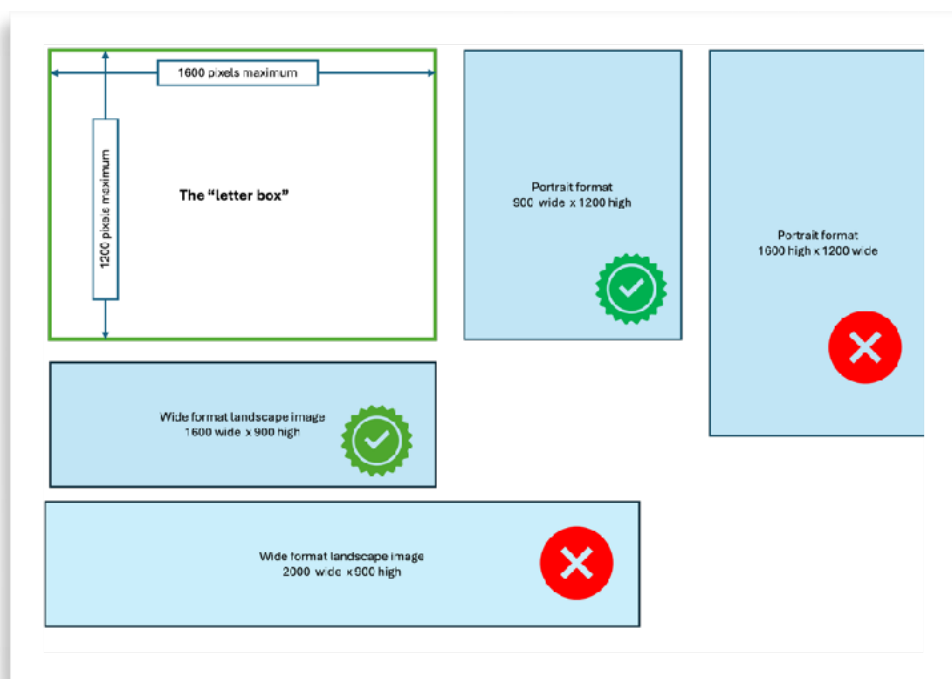
Gill and Sally will give you lots of excellent insight into judging and from this you will be able to spot those things we, as the photographer, don't always spot but others do. Sally will critique your images, and, if you choose to, you could use that information to make your photographs even better.

**YPU has a maximum image** size for your digital images of 1600 x 1200 pixels (px) - so does DVCC.

What this actually means is that your digital images must be **no larger than 1600 px wide and no larger than 1200 px high**.

Think of this as a letter box - any image that is wider than 1600 pixels won't get through the letter box, nor will any image that is taller than 1200 pixels.

Now the thing to note here is that 1600x1200 is a ratio of 4:3, so if you are cropping your pictures to make maximum use of the 1600x1200 then crop your images using a 4:3 ratio.



Why 1600 x 1200? - actually I've no idea but perhaps it relates to an old maximum resolution of projectors, - as they say "it is what it is".

However, you might be entering a panorama that is seen at its best by using a "widescreen" 16:9 ratio - that's fine but resize your image at 1600 px wide by 900 px high - this will fit into the letterbox.

It's not always the "longest side" that needs to be set at 1600 px, because if your image is a portrait the longest side will be the height, in which case the longer side needs to be no greater than 1200 px.

Remember: Photography at Dearne Valley Camera club carries the mantra of "Have fun". So please, please remember that entering into competitions is not a requirement, there is no requirement for anyone to submit a photo and no-one should feel ill at ease for not submitting an image.

Enjoy your photography for your benefit